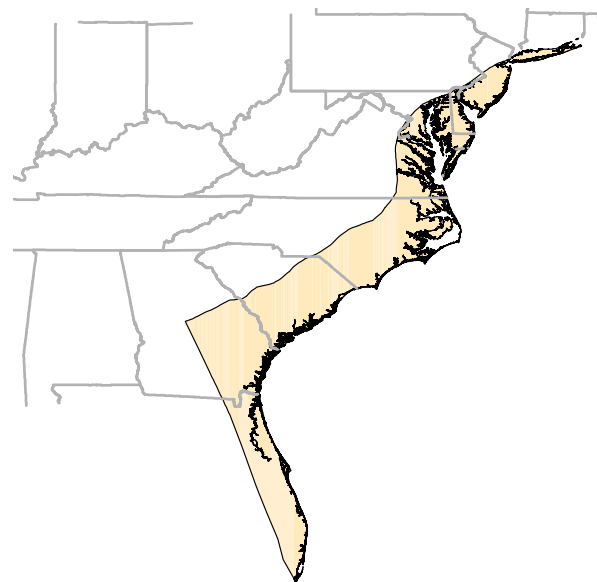


# Maximizing the Economic & Environmental Benefits from Mine Water in the Atlantic Coastal Plain

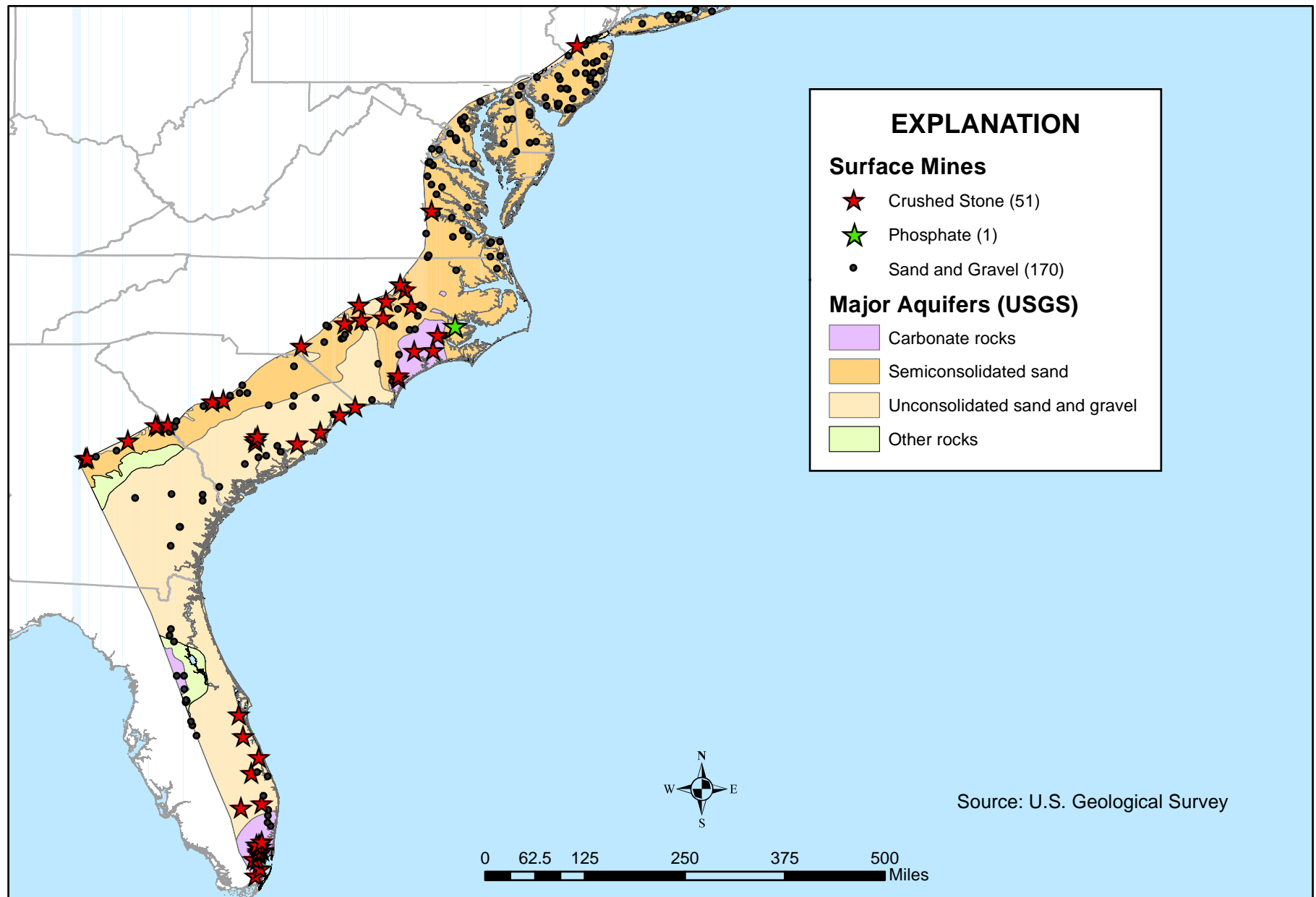


## Presentation Topics

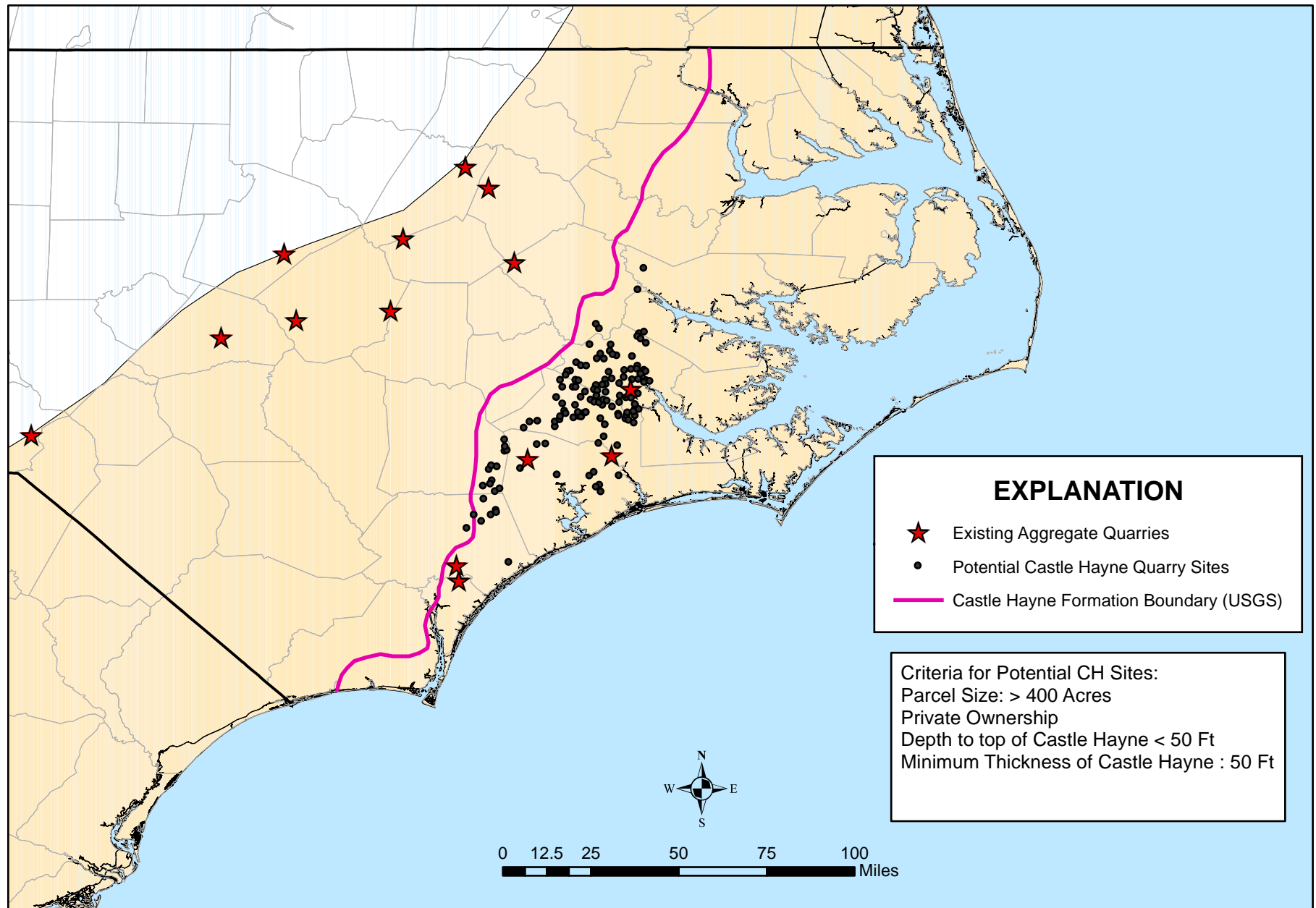
- Available Groundwater Resource
- Regulations
- Benefits
- Economics
- Example Project



## Resource: Mine Locations in ACP

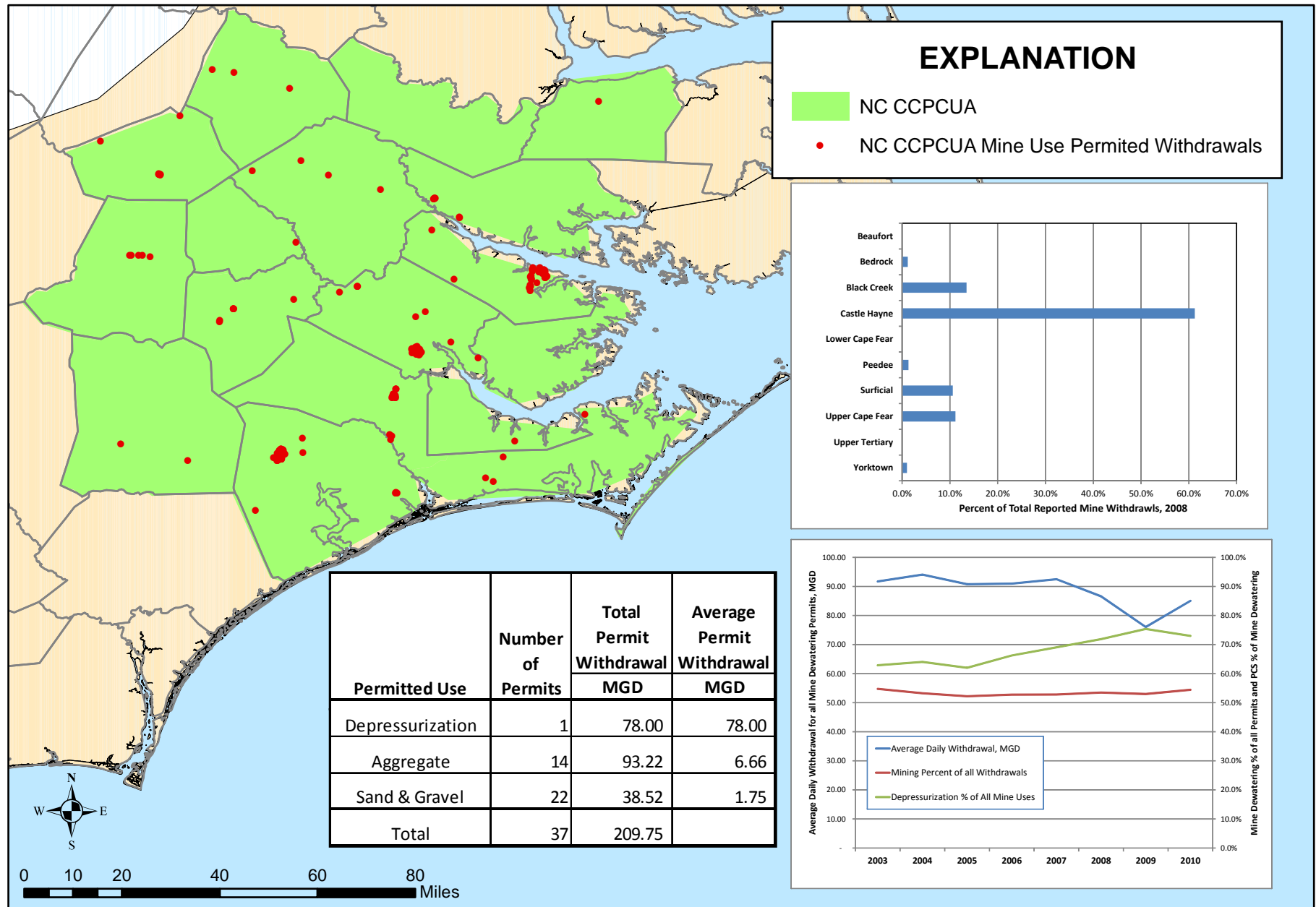


# Resource: Potential Future Quarry Sites in NC ACP

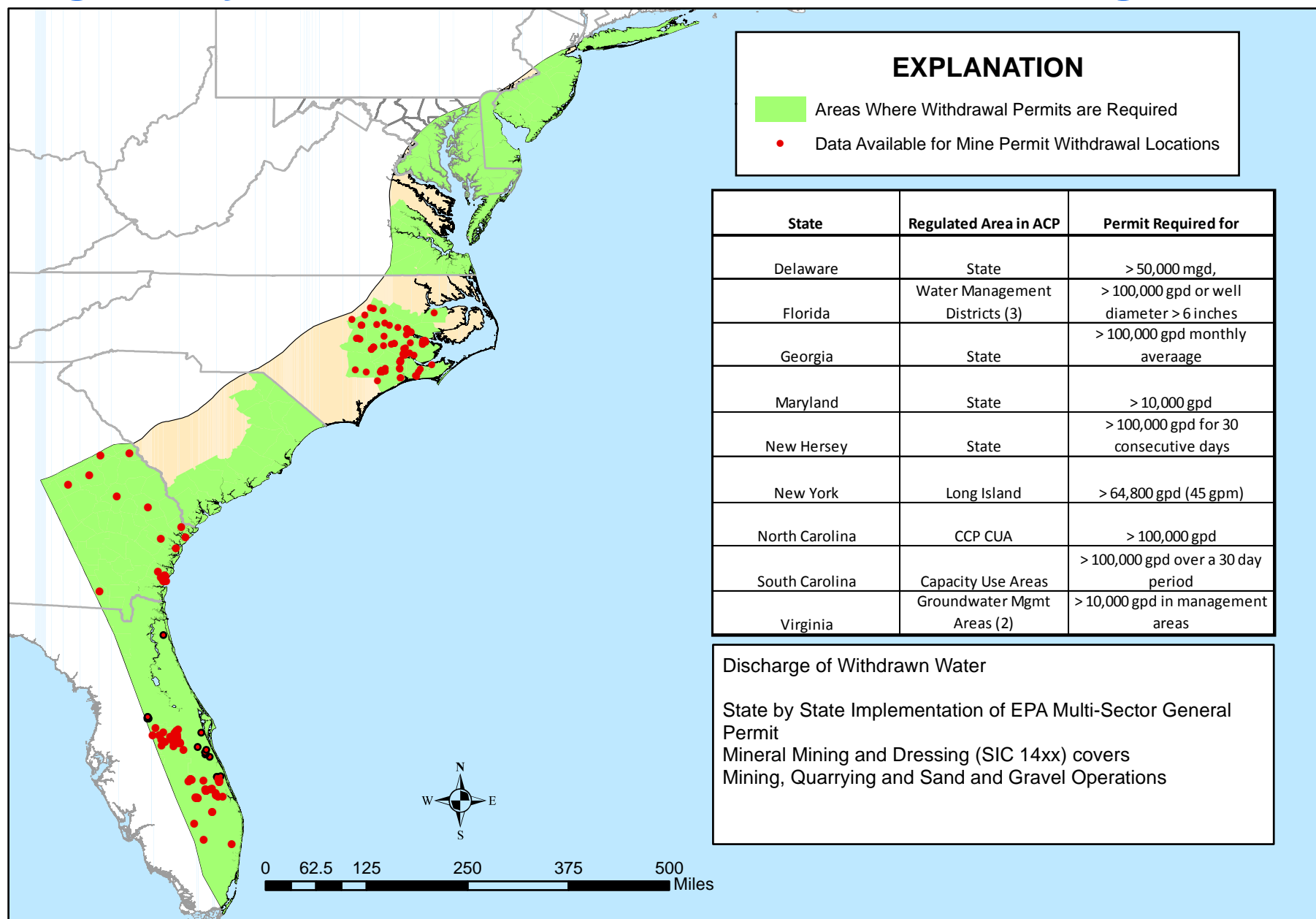




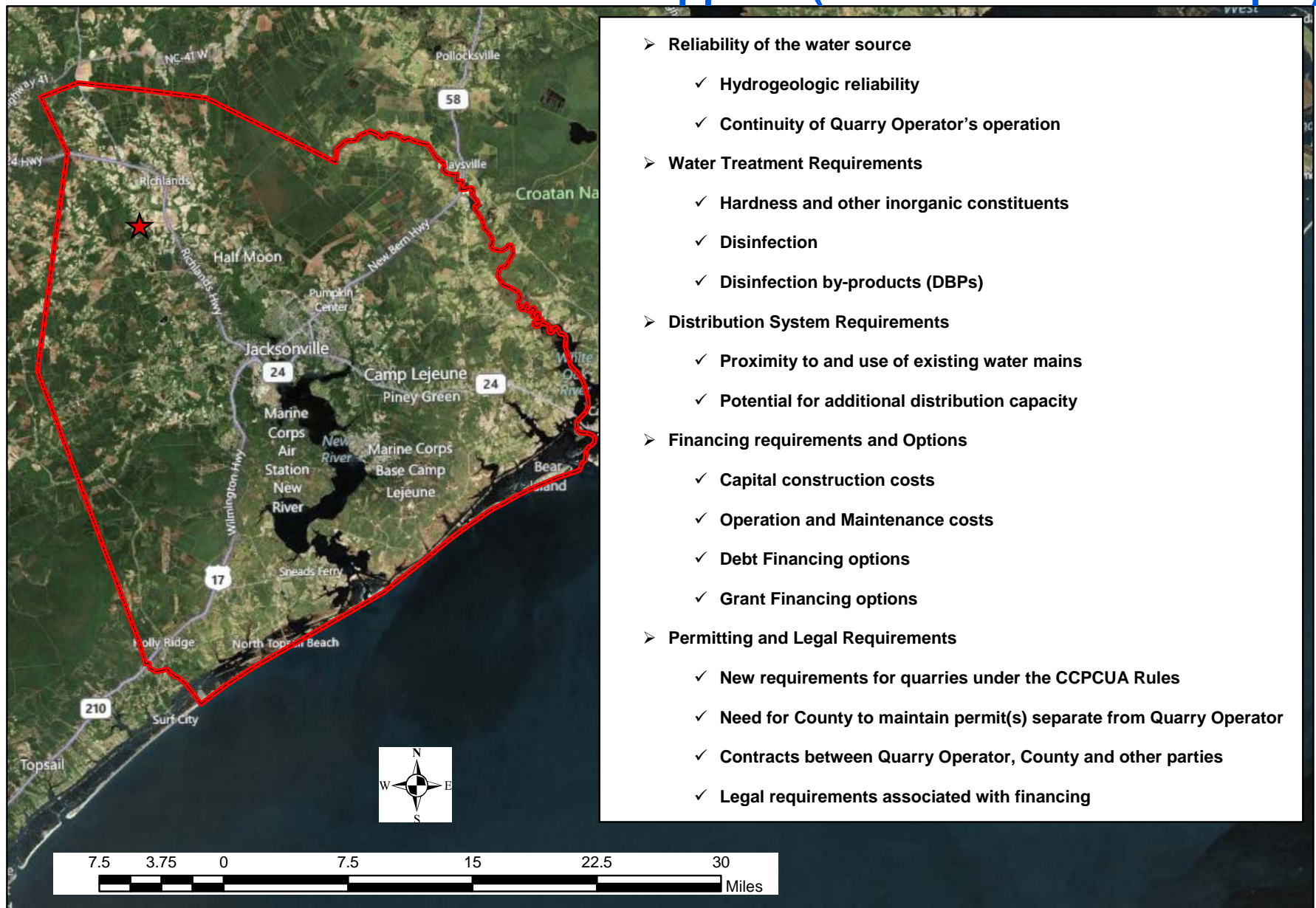
# Resource: Available Quantity from Mines in NC CCPCUA



# Regulatory: Groundwater Withdrawal and Discharge Permits

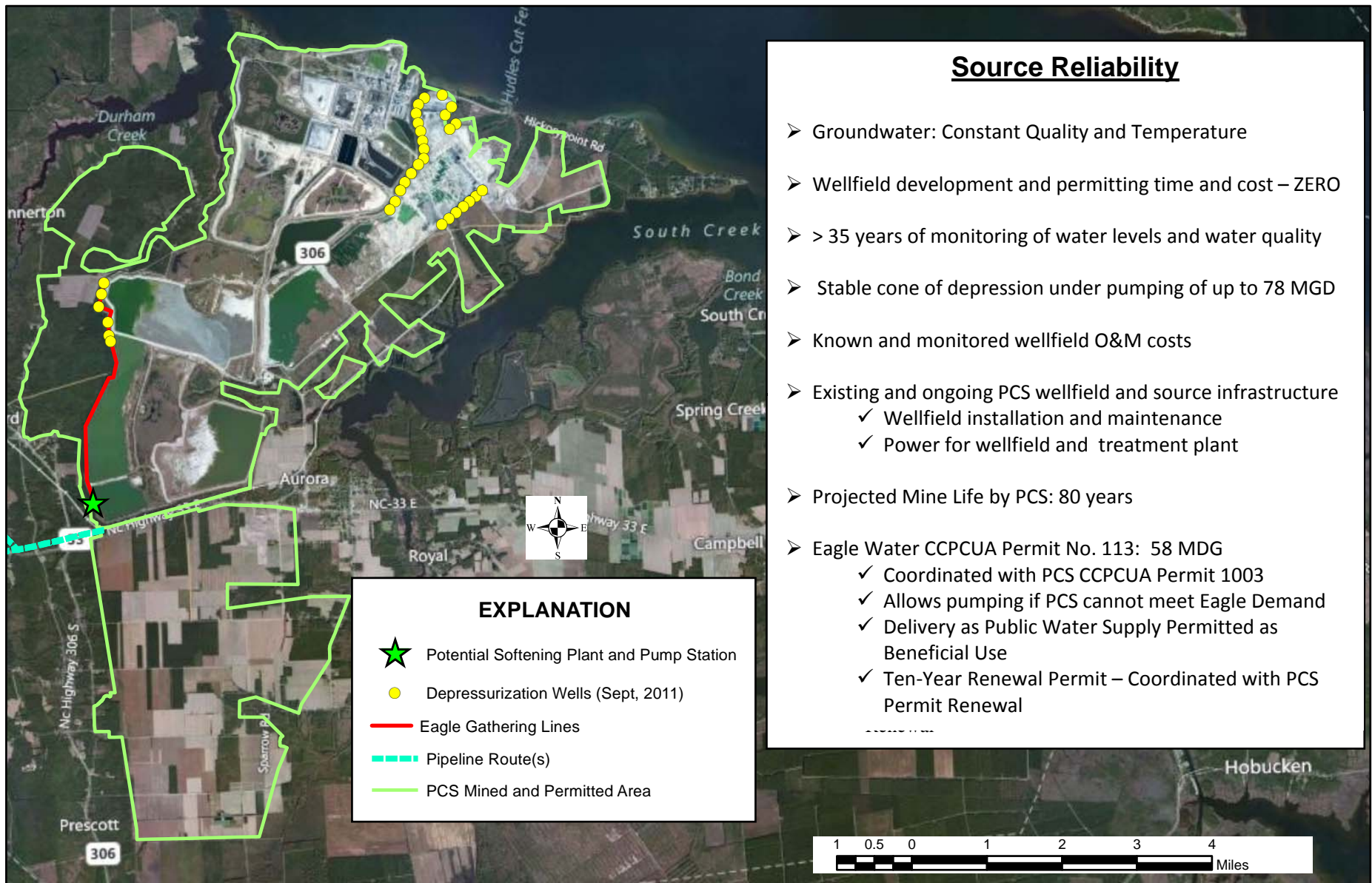


# Issues for Quarries as Water Supplies (Onslow Co. NC Example)



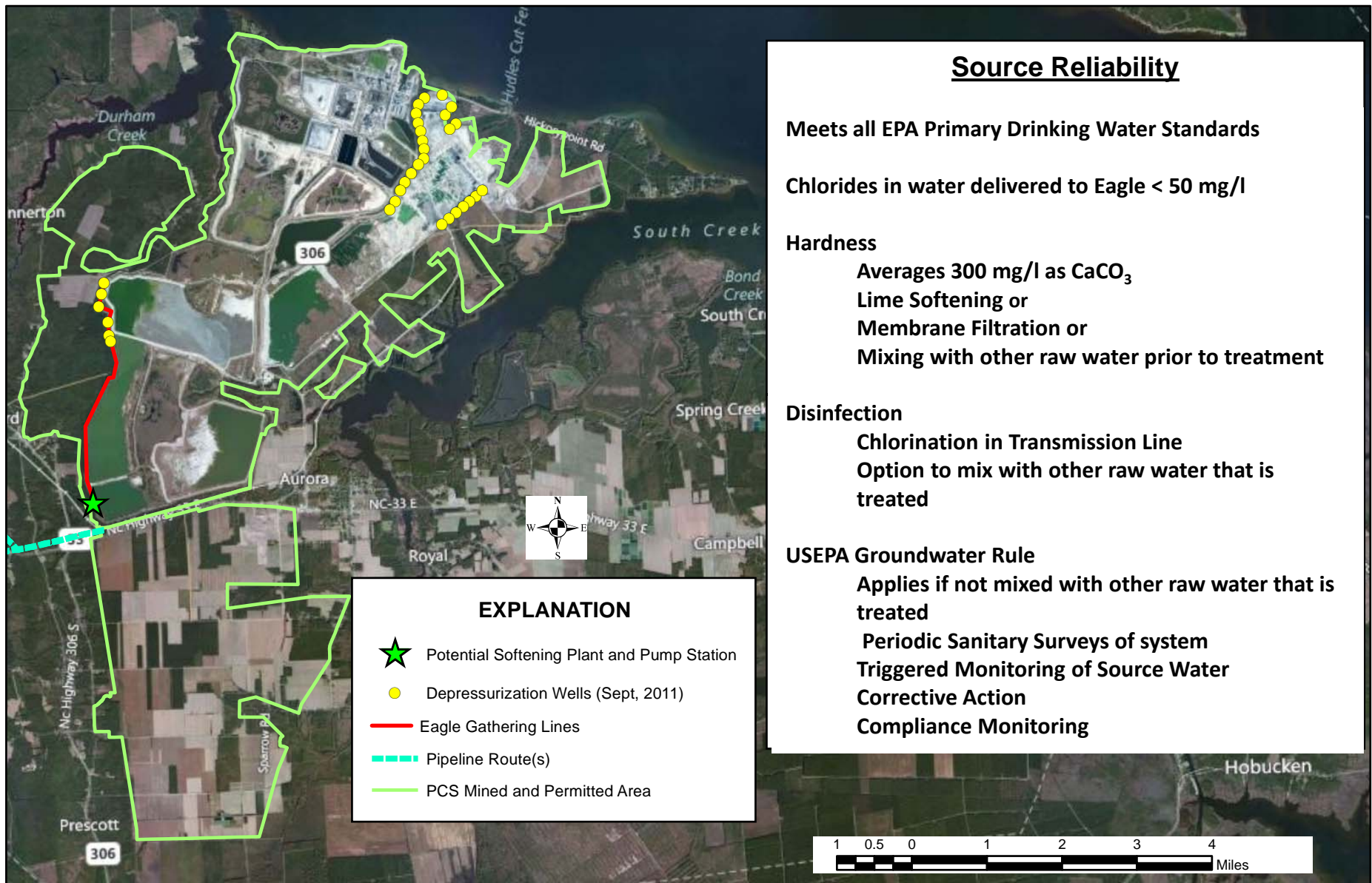


# Example Project: Eagle Water Company

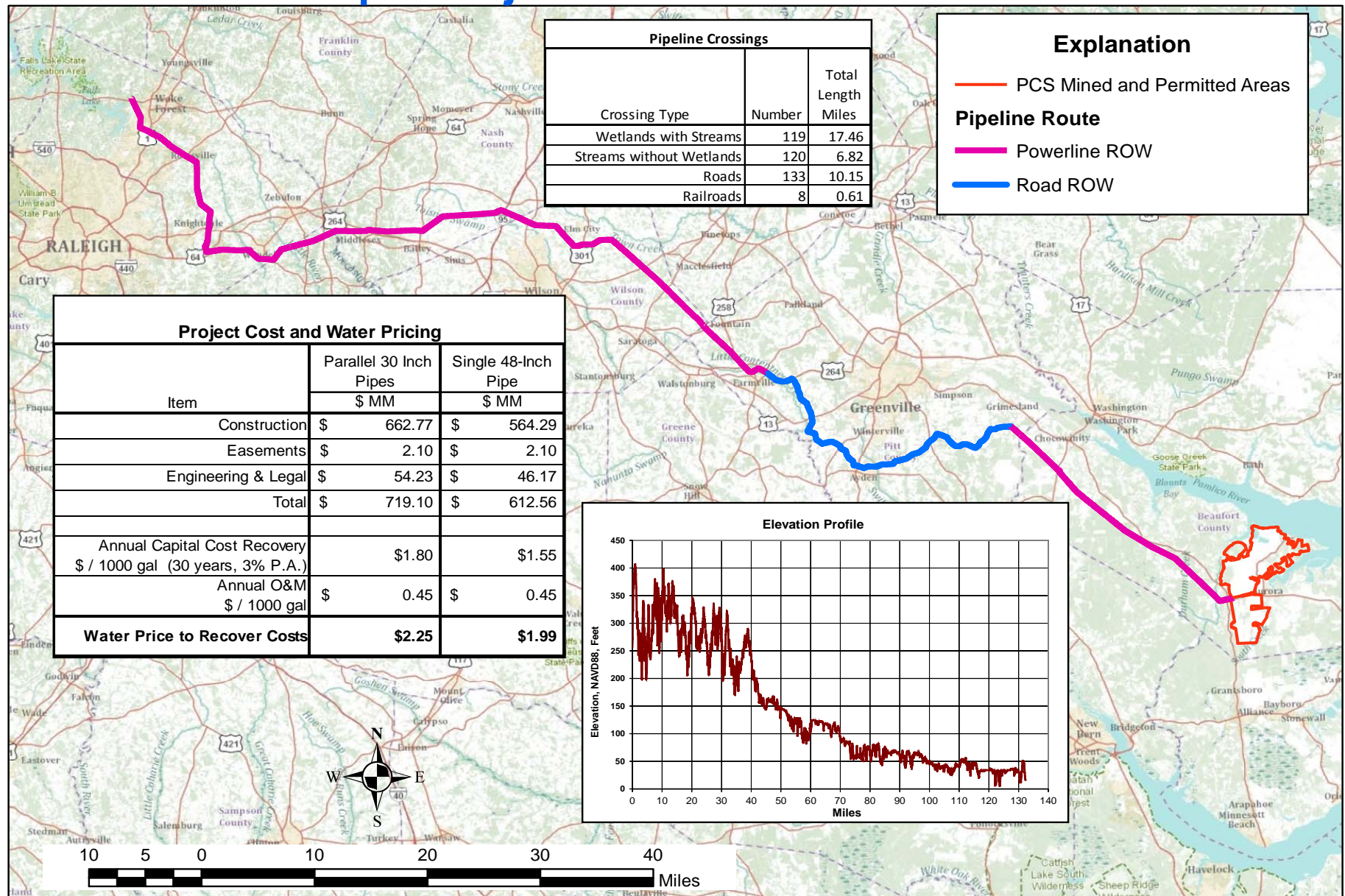




# Example Project: Eagle Water Company

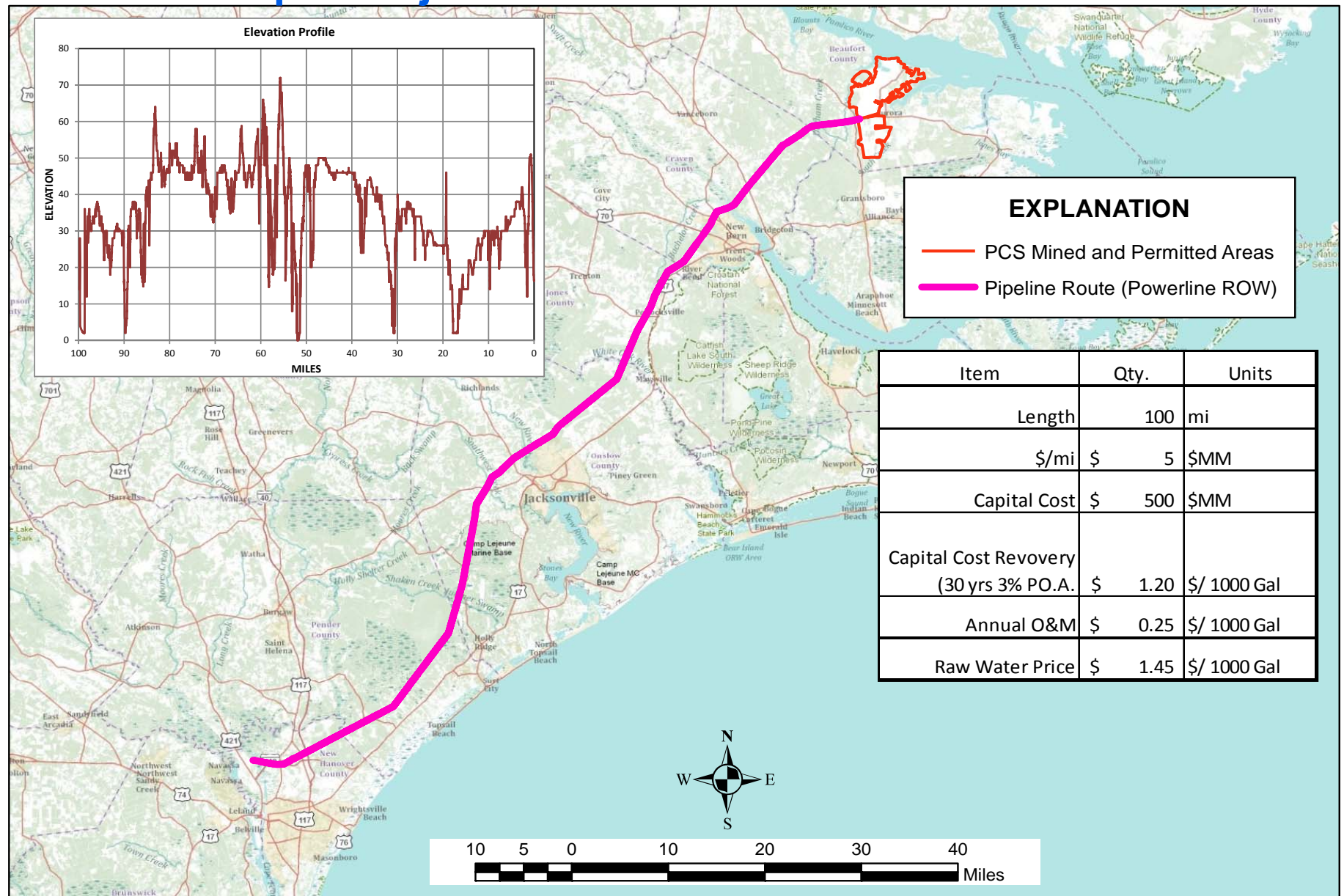


# Example Project: 132 Mile Transmission Line



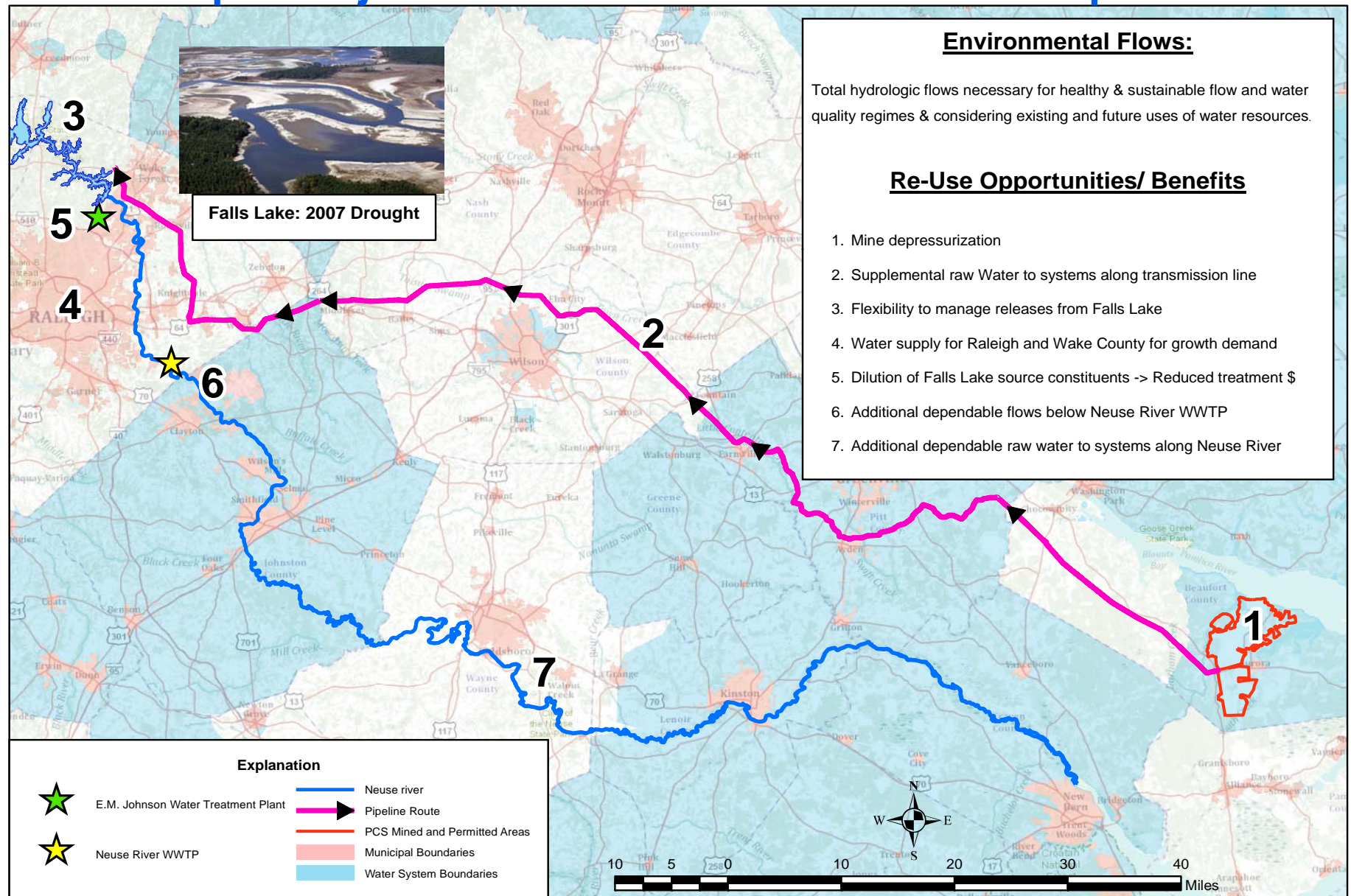


# Example Project: 100-Mile Coastal Transmission Line

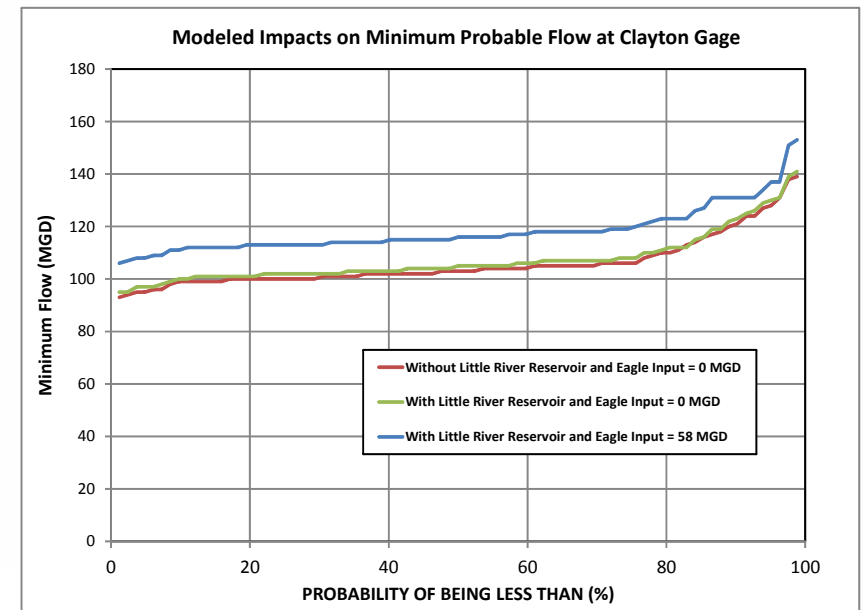
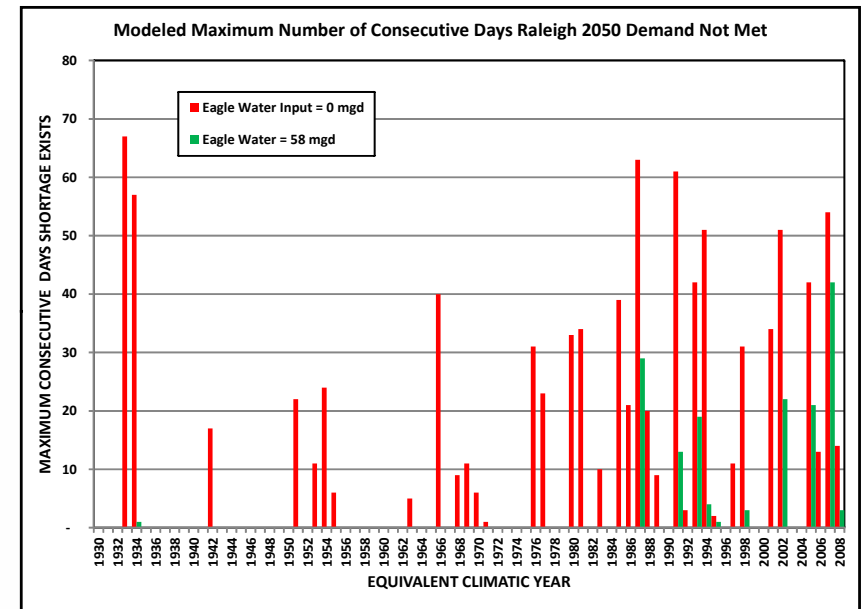
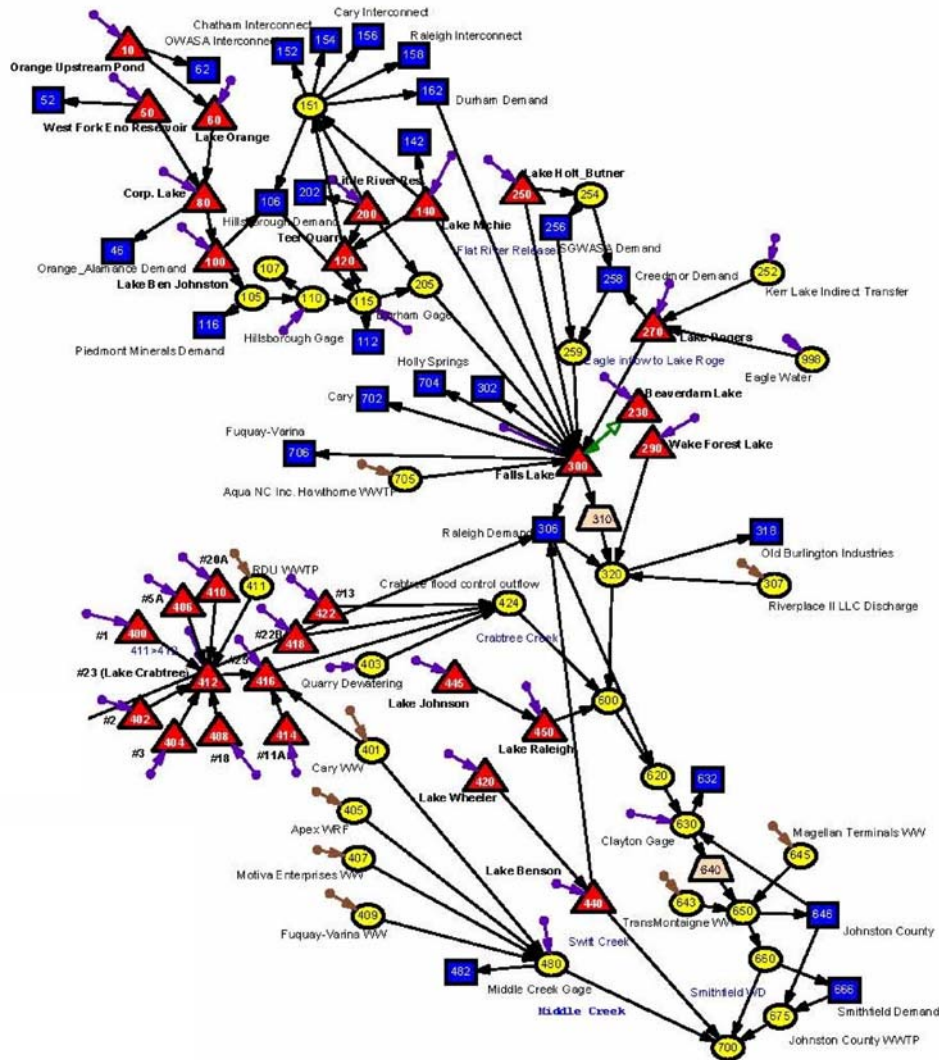




# Example Project: Environmental Flows and Multiple Re-Use



# Example Project: Use of DWR OASIS River Basin Model





# Conclusions

- Mine water is a significant source of additional water for other uses in the ACP
- Mine Water not from wells is surface water and requires more treatment
- Private ownership of source water necessitates Public-Private Partnerships
- Can be an important part of a total water management strategy
- Economics requires regional institutional and technical approaches
- Provides for multiple opportunities for re-use





## Contact and Download Info

This presentation can be downloaded or opened in Adobe pdf format from:

[www.eagle-water.com](http://www.eagle-water.com)

Click on the links at the top right of the page – right click to download, left to open

Eric Lappala, P.E., P.H.

Eagle Resources, P.A.

P.O. Box 11189

Southport, NC 28461

919-345-1013

[elappala@eagleresources.com](mailto:elappala@eagleresources.com)